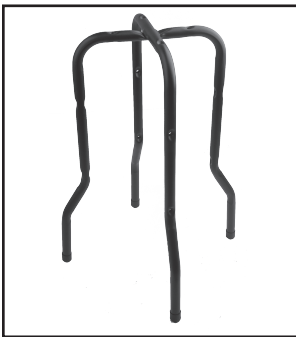
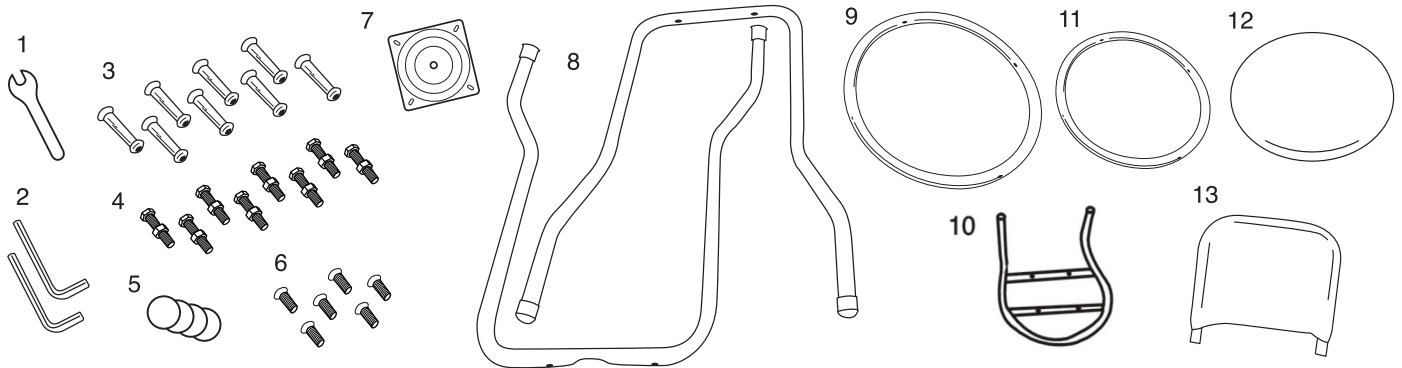


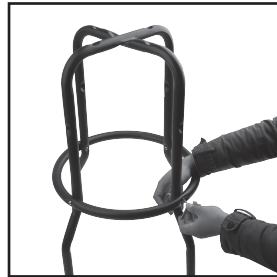
# BAR STOOL WITH BACKREST

## Parts List

- |                                  |                                     |                            |
|----------------------------------|-------------------------------------|----------------------------|
| 1. Wrench(1)                     | 6. Machine screws (4)               | 11. Inner support ring (1) |
| 2. Allen wrenches (2)            | 7. Swivel base (1)                  | 12. Stool pad (1)          |
| 3. Sleeved allen head screws (8) | 8. Stool legs (2)                   | 13. Backrest pad (1)       |
| 4. Nuts and bolts (8)            | 9. Outer support ring/fool rest (1) |                            |
| 5. Shims (4)                     | 10. Multi-ring base (1)             |                            |



Step 1: Place the two legs together as shown in the image above



Step 2: Slide the larger ring over the legs and align the holes. Slide the sleeved, allen head screw into the hole and an allen head screw through the other side and tighten down using the supplied allen wrenches. Repeat this process for the inner support ring with allen wrenches.



Step 3: Place the swivel plate on top of legs and align holes. Insert bolts and screw on nut securely with allen wrenches and wrench.



Step 4: Place the seat base on top of the swivel plate. Align the holes and insert the bolts. Screw on nuts securely with allen wrenches.



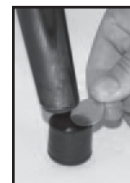
Step 5: Bolt the seat pad to the seat base with allen wrenches.



Step 6: Slide the backrest into the tubes on the seat base. Insert allen head screws into the holes and tighten them securely with allen wrenches.



*\* image may be different depending on the style*



If the stool legs are uneven insert a shim (supplied) between the foot pad and stool leg to level the stool.

